

D-60W-ND 60W CONSTANT VOLTAGE LED DRIVER NON-DIMMING



IMPORTANT SAFETY PRECAUTIONS

Before you begin, read these instructions completely and carefully.

- Be certain electrical power is OFF before and during installation, maintenance and removal.
- Luminaire wiring must be properly grounded in accordance with the NEC and any applicable local code requirements.
- Use only UL or IEC approved wire for input/output connections.
- Verify that supply voltage matches voltage on luminaire label. Installation to any other connection may void the warranty.
- Wear gloves during installation to prevent injury and do not expose wiring to metal or sharp edges.
- Do not install in areas subject to combustible vapors or gases. Verify luminaire location ratings are suitable for installation environment (refer to specification sheet as needed).
- Do not restrict luminaire's ventilation by covering with material that will cause luminaire to overheat and potentially shorten the life span.
- Ensure LED luminaire has the correct polarity before installation.
- Lynx Linear Lighting is not liable for damages resulting from improper or faulty installation or operation or unauthorized modifications to the luminaire.
- Electrostatic discharge can damage the LED tapelight.
- Do not touch or clean the LEDs.
- Not suitable for covering with thermally insulating material.

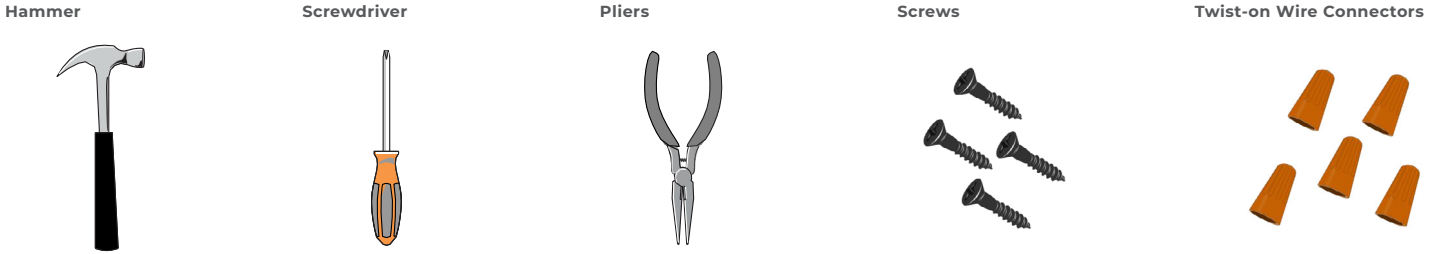


WARNING: To reduce the risk of personal injury or property damage from fire, electrical shock, falling parts, abrasions, burns and all other hazards, read all provided warnings and follow installation instructions.

This product should be installed, inspected and maintained by a qualified and licensed electrician. Installation of luminaire must be in accordance with NEC and local code requirements.

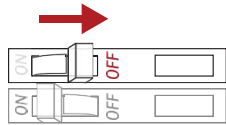
SAVE THESE INSTRUCTIONS

REQUIRED TOOLS

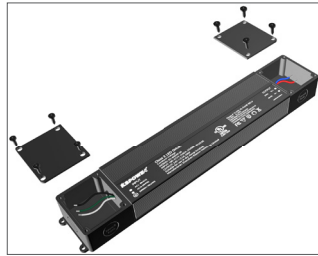


INSTALLATION INSTRUCTIONS

A) Turn power off at circuit breaker.

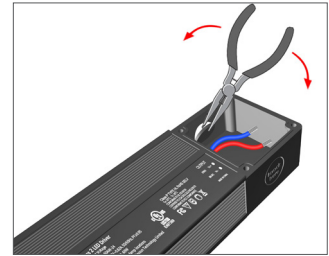
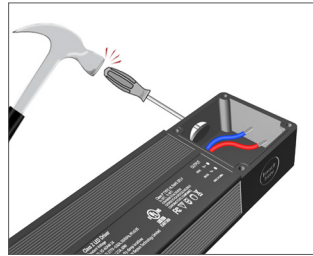


B) Remove screws and open the cover.



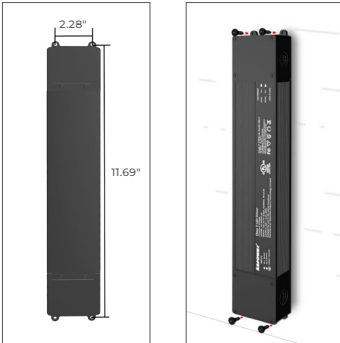
C) Punch out knockouts for conduit access.

- Use screwdriver and hammer to loosen knockout.
- Grip knockout with pliers. Bend back and forth until broken off.



D) Mount driver to surface.

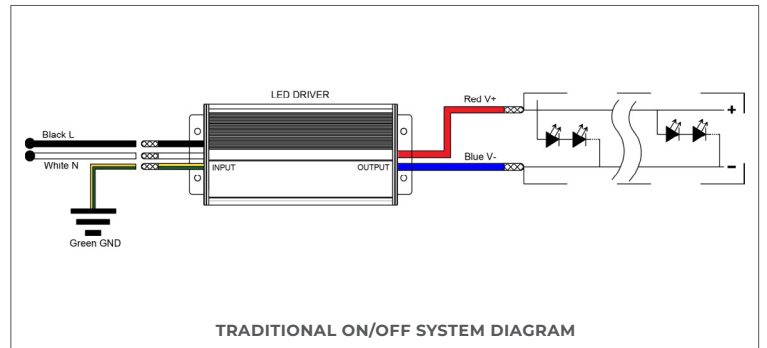
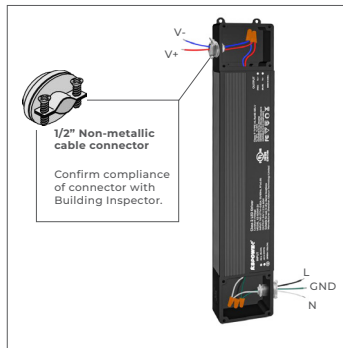
- Mount screws into surface 2.28 inches apart horizontally and 11.69 inches vertically.
- Fix the power supply on a horizontal surface with screws according to the fixing hole position



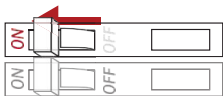
E) Wire driver to AC input and low voltage load.

- Wire LED Driver. Ensure main power is OFF.
 1. GND*: Attach to J-Box and to Primary Ground
 2. Neutral: To Primary High Voltage Neutral
 3. Line (Hot): To Primary High Voltage Line Hot
 4. V+: To Low Voltage Load V+
 5. V-: To Low Voltage Load V-

*LED Driver and J-Box must be grounded in accordance with local and national electrical codes. Ground the LED Driver and J-Box with the included Green Grounding Screw. Some compatible LED drivers are Class II certified and do not require a GF (Ground Fault Connection). Refer to the LED driver label and installation guide for more information.



F) Turn power on at circuit breaker.



G) Installation is complete.

SAVE THESE INSTRUCTIONS