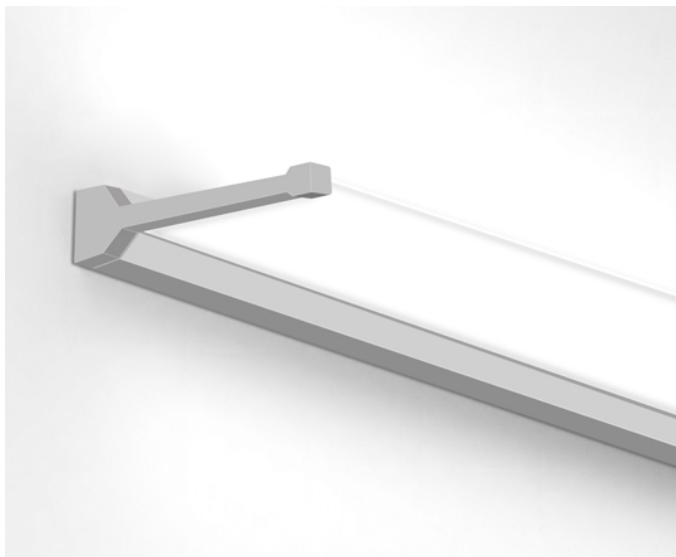




GLACIER AMBIENT EDGE-LIT ARCHITECTURAL LINEAR LED (WALL MOUNT)



IMPORTANT SAFETY PRECAUTIONS

Before you begin, read these instructions completely and carefully.

- Be certain electrical power is OFF before and during installation, maintenance and removal.
- Luminaire wiring must be properly grounded in accordance with the NEC and any applicable local code requirements.
- Use only UL or IEC approved wire for input/output connections.
- Verify that supply voltage matches voltage on luminaire label. Installation to any other connection may void the warranty.
- Wear gloves during installation to prevent injury and do not expose wiring to metal or sharp edges.
- Do not install in areas subject to combustible vapors or gases. Verify luminaire location ratings are suitable for installation environment (refer to specification sheet as needed).
- Do not restrict luminaire's ventilation by covering with material that will cause luminaire to overheat and potentially shorten the life span.
- Ensure LED luminaire has the correct polarity before installation.
- Lynx Linear Lighting is not liable for damages resulting from improper or faulty installation or operation or unauthorized modifications to the luminaire.
- Electrostatic discharge can damage the LED tapelight.
- Do not touch or clean the LEDs.
- Not suitable for covering with thermally insulating material.



WARNING: To reduce the risk of personal injury or property damage from fire, electrical shock, falling parts, abrasions, burns and all other hazards, read all provided warnings and follow installation instructions.

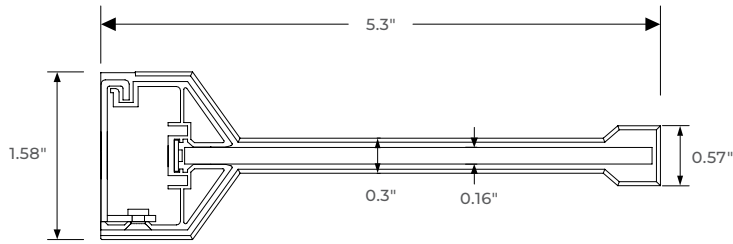
This product should be installed, inspected and maintained by a qualified and licensed electrician. Installation of luminaire must be in accordance with NEC and local code requirements.

SAVE THESE INSTRUCTIONS

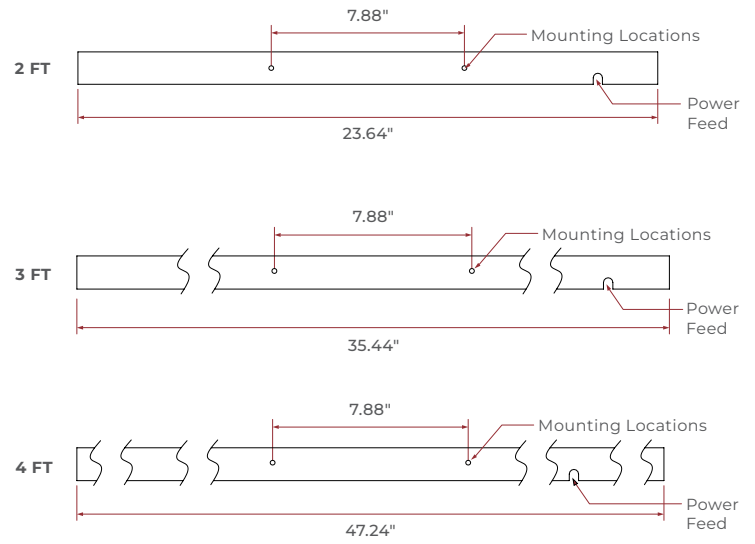
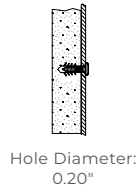


GLACIER AMBIENT EDGE-LIT ARCHITECTURAL LINEAR LED (WALL MOUNT)

DIMENSIONS



CEILING TYPE



ACCESSORIES



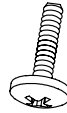
Wire Nut



Anchor



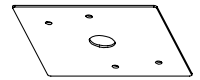
Screw PA4X30



Screw CM4X12

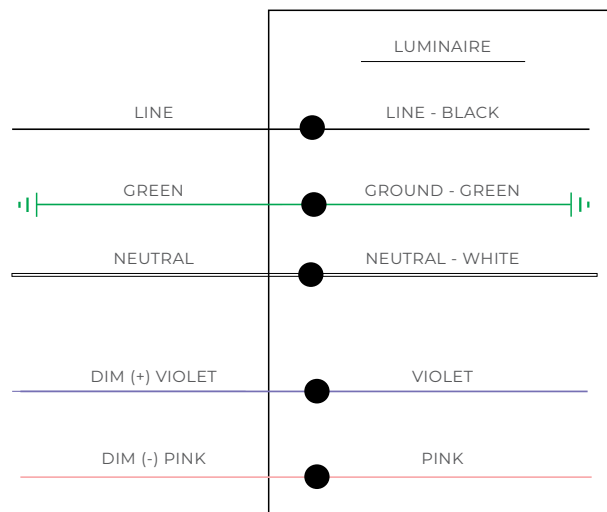


Power Cord



Square Plate

ELECTRICAL CONNECTIONS




SAVE THESE INSTRUCTIONS





GLACIER AMBIENT EDGE-LIT
ARCHITECTURAL LINEAR LED (WALL MOUNT)

INSTALLATION INSTRUCTIONS

- A)** Take off the cover using screwdriver.
- B)** Connect power cord wiring (provided) to junction box using wire nuts. Cover the junction box with square plate and secure with screws followed by plaster.
- C)** Feed the power cord through the opening of the cover as shown.
- D)** Secure the cover to the mounting surface.
- E)** Make wiring connections using quick connectors and wire nuts. Hide all wires in the junction box.
- F)** Secure LED fixture to the cover using screws.
- G)** Installation is complete. 

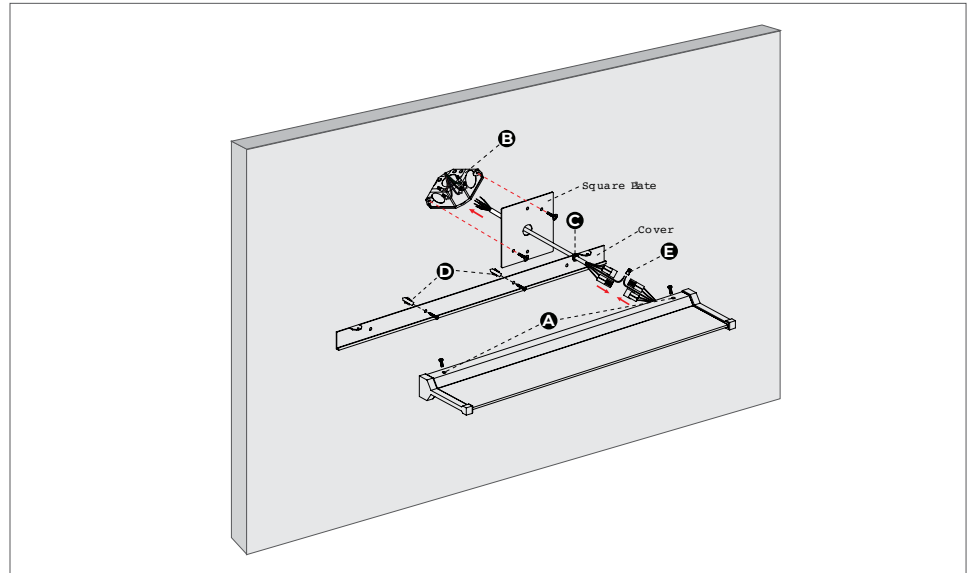


FIGURE 1

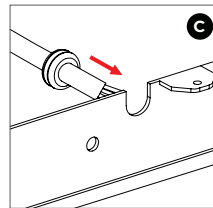


FIGURE 2

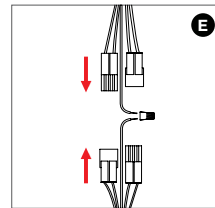


FIGURE 3

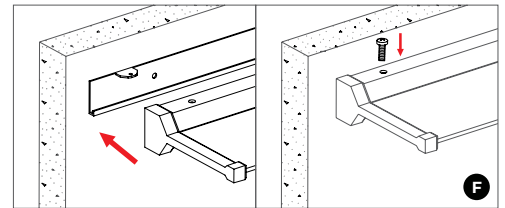


FIGURE 4

SAVE THESE INSTRUCTIONS

