



## IMPORTANT SAFETY PRECAUTIONS

**Before you begin, read these instructions completely and carefully.**

- Be certain electrical power is OFF before and during installation, maintenance and removal.
- Luminaire wiring must be properly grounded in accordance with the NEC and any applicable local code requirements.
- Use only UL or IEC approved wire for input/output connections.
- Verify that supply voltage matches voltage on luminaire label. Installation to any other connection may void the warranty.
- Wear gloves during installation to prevent injury and do not expose wiring to metal or sharp edges.
- Do not install in areas subject to combustible vapors or gases. Verify luminaire location ratings are suitable for installation environment (refer to specification sheet as needed).
- Do not restrict luminaire's ventilation by covering with material that will cause luminaire to overheat and potentially shorten the life span.
- Ensure LED luminaire has the correct polarity before installation.



**WARNING:** To reduce the risk of personal injury or property damage from fire, electrical shock, falling parts, abrasions, burns and all other hazards, read all provided warnings and follow installation instructions.

This product should be installed, inspected and maintained by a qualified and licensed electrician. Installation of luminaire must be in accordance with NEC and local code requirements.

**SAVE THESE INSTRUCTIONS**



### TOOLS REQUIRED



LADDER



SAFETY GLASSES



ELECTRICAL TAPE



PHILLIPS SCREWDRIVER



FLAT BLADE SCREWDRIVER



PLIERS



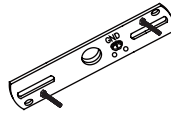
WIRE STRIPPERS

### HARDWARE INCLUDED

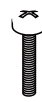


NOTE: Hardware not shown to actual size.

PART	DESCRIPTION	QUANTITY
AA	Mounting unit	1
BB	Mounting screw	2
CC	Wire nut	3
DD	Cap nut	2



\_\_\_\_\_ AA



\_\_\_\_\_ BB



\_\_\_\_\_ CC



\_\_\_\_\_ DD

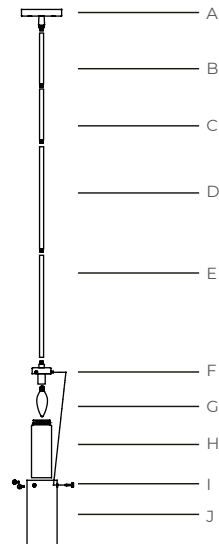
### PRE-INSTALLATION

#### PLANNING INSTALLATION

- ☐ Read all instructions before installation.
- ☐ To avoid damaging this product, assemble it on a soft, non-abrasive surface, such as carpet or cardboard.
- ☐ Keep your receipt and these instructions for proof of purchase.

#### PACKAGE CONTENTS

PART	DESCRIPTION	QUANTITY
A	Canopy	1
B	Tube	1
C	Tube	1
D	Tube	1
E	Tube	1
F	Socket	1
G	LED bulb	1
H	Inner glass shade	1
I	Screw	3
J	Outer glass shade	1



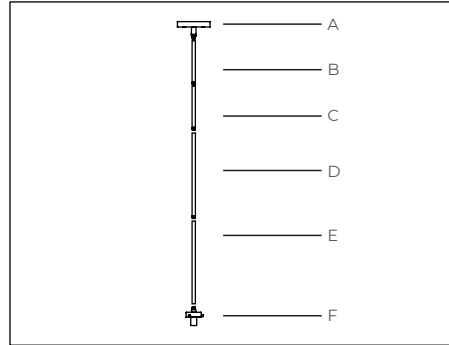
**SAVE THESE INSTRUCTIONS**



## INSTALLATION

### 1) ASSEMBLING THE LIGHT FIXTURE

- ☐ Lay out all parts on smooth surface as shown in illustration.
- ☐ Use the wire which is on the socket (F) to pass through the metal tube (E, D, C, B), the canopy (A) and tighten them together.

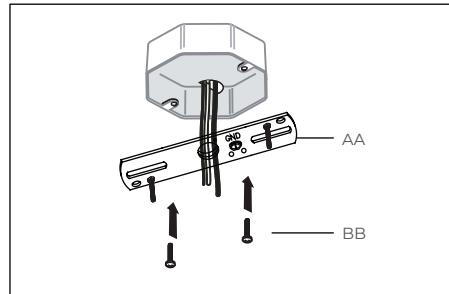


### 2) ATTACHING THE MOUNTING UNIT TO THE OUTLET BOX

- ☐ Remove the pre-assembled cap nut from the mounting unit (AA).
- ☐ Screw the mounting screws (BB) through the holes on the mounting unit (AA) into the screw holes on the outlet box.



**NOTE:** The preinstalled support screw on the mounting unit (AA) should protrude out away from the outlet box.

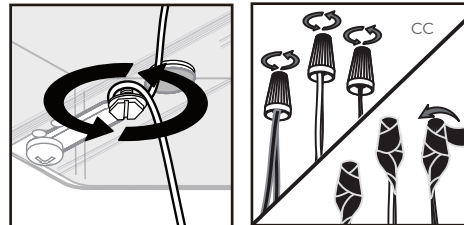


### 3) MAKING THE ELECTRICAL CONNECTIONS

- ☐ Connect the copper wire from the light fixture to the mounting unit (AA) by securing it with the pre-installed ground screw.
- ☐ Connect the black wire from the fixture to the black wire from the outlet box, the white wire from the fixture to the white wire from the outlet box, and the copper wire from the fixture to the ground wire from the outlet box with the wire nuts (CC). Secure with electrical tape (not included).

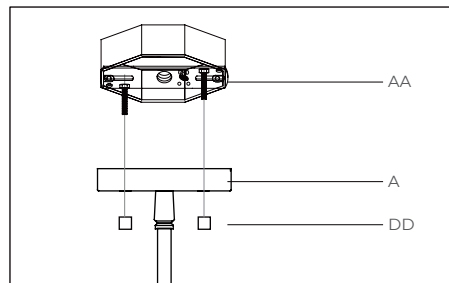


**NOTE:** If the wires from the fixture are the same color, attach the side with markings or letters to the black (positive) wire and the other to the white (neutral) wire.



### 4) SECURING THE LIGHT FIXTURE

- ☐ After wires are connected, tuck them carefully inside the outlet box.
- ☐ Secure the canopy (A) to the junction box by placing it over the pre-installed support screws on the mounting unit (AA) and securing it with the cap nuts (DD).



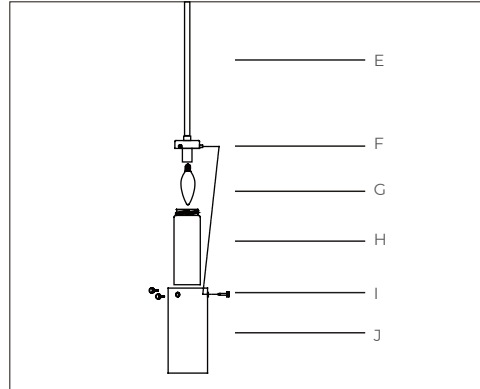
**SAVE THESE INSTRUCTIONS**



## INSTALLATION (CONTINUED)

### 5) INSTALLING THE LIGHT BULB

- ☐ Remove the pre-assembled screws (F), and take off the inner glass shade (H) and outer glass shade (J).
- ☐ Install one 4-watt max. candelabra-base LED bulb (G) (included) onto socket (F). Screw inner glass shade (H) onto socket (F). Install outer glass shade (J) onto socket (F) by tighten screws (I) with socket (F).



**CAUTION:** Carefully install LED bulb and glass shades. Any improper installation will cause bulb or glass shades broken.

## OPERATION

### 1) TURNING THE LIGHT ON

- ☐ Turn the light switch on to activate the fixture.

## TROUBLESHOOTING

PROBLEM	POSSIBLE CAUSE	SOLUTION
The bulb will not light.	The bulb is burned out.	Replace the light bulb.
	The power is off.	Ensure the power supply is On.
	There is a faulty wire connection.	Check the wiring.
	The circuit breaker is off.	Ensure the circuit breaker is in the On position.
The fuse blows or circuit breaker trips when the light is turned on.	There are crossed wires or the power wire is grounding out.	Check the wire connections. Contact a qualified electrician.

**SAVE THESE INSTRUCTIONS**

