



## IMPORTANT SAFETY PRECAUTIONS

Before you begin, read these instructions completely and carefully.

- Be certain electrical power is OFF before and during installation, maintenance and removal.
- Luminaire wiring must be properly grounded in accordance with the NEC and any applicable local code requirements.
- Use only UL or IEC approved wire for input/output connections.
- Verify that supply voltage matches voltage on luminaire label. Installation to any other connection may void the warranty.
- Wear gloves during installation to prevent injury and do not expose wiring to metal or sharp edges.
- Do not install in areas subject to combustible vapors or gases. Verify luminaire location ratings are suitable for installation environment (refer to specification sheet as needed).
- Do not restrict luminaire's ventilation by covering with material that will cause luminaire to overheat and potentially shorten the life span.
- Ensure LED luminaire has the correct polarity before installation.




**WARNING:** To reduce the risk of personal injury or property damage from fire, electrical shock, falling parts, abrasions, burns and all other hazards, read all provided warnings and follow installation instructions.

This product should be installed, inspected and maintained by a qualified and licensed electrician. Installation of luminaire must be in accordance with NEC and local code requirements.

**SAVE THESE INSTRUCTIONS**

**INSTALLATION INSTRUCTIONS**

- A)** Feed supply wires through rear access door and make electrical connections. The rear access door is located on the backside of the housing with its own knockout for making quick wiring connections to the supply wires. This forgoes the need to remove the lens cover and open the wiring compartment. (Figure 1)
- B)** Remove knockout by using a hammer or punch. Use screwdriver to loosen the screws securing the rear access door. (Figure 2)
- C)** Install 3/8" cable connector (included) for the supply wire following National Electric Code and local codes through this knockout on access door. (Figure 3)  
Use 14 or 12AWG wires. AC should be protected by circuit breaker or fuse.
- D)** Strip back jacket on supply wires to 3/8" and use push-in wire connectors inside housing to connect wires (Black to Black/Hot, White to White/Neutral and Yellow/Green/Ground to bare wire) through knockout so that push-in connectors are positioned on the housing side of the access door. (Figure 4)
- E)** Replace rear access door and secure with screw. Note: Be sure that the wires are not pinched or damaged by any part of the housing or the cover. (Figure 5)
- F)** Determine locations for each fixture. Make sure the distance between fixtures to be interconnected does not exceed 12".
- G)** Use screwdriver or driver bit to tighten captive mounting screws and secure fixture to an appropriate mounting surface.
- H)** Installation is complete. 

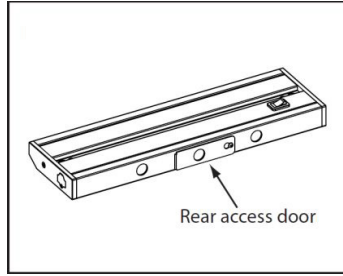


FIGURE 1

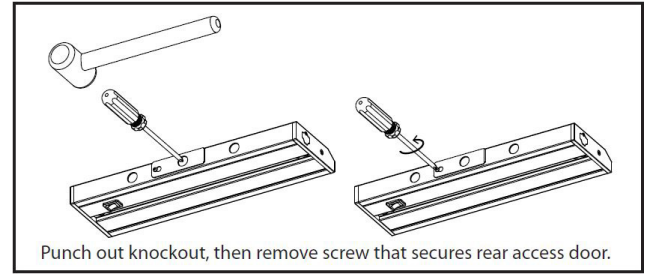


FIGURE 2

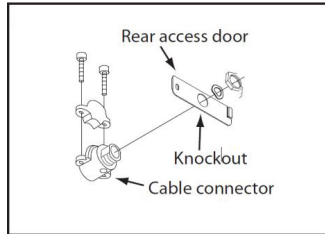


FIGURE 3

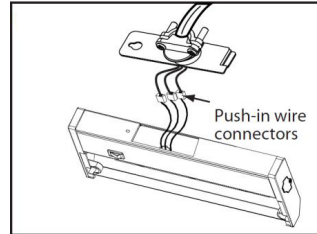


FIGURE 4

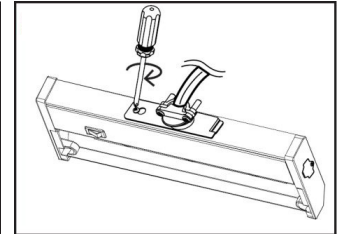


FIGURE 5

**SUPPLY WIRES CONNECTION VIA HOUSING KNOCKOUTS**

**NOTE:** This type of installation is less common – only done when access door cannot be used.

- A)** Open wiring compartment by removing screws at each end and lifting cover for housing body.

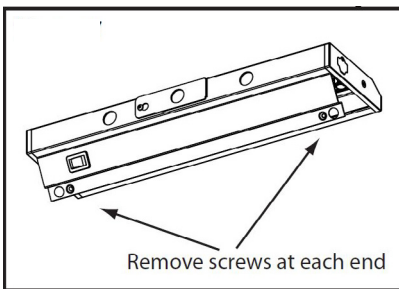


FIGURE 6

- B)** Punch out whichever knockout is best suited for connection to 120V supply wires. Knockouts are located along back and top of housing.

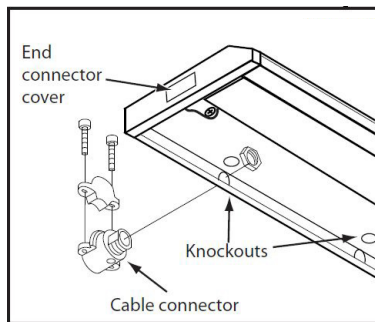


FIGURE 7

- C)** Install cable connector and connect fixture wires following National Electric Code and/or local building code requirements. Use minimum 18AWG solid copper wires. AC supply should be 120V protected by circuit breaker or fuse.

**D)** Attach line voltage AC supply wires to fixture lead wires: Black to Black/Hot, White to White/Neutral and Yellow/Green/Ground to Green or bare wire inside the fixture. Secure each connection using push-in wire connectors provided on the fixture lead wire. If your system has no ground wire, consult a qualified electrician before proceeding with the installation. Note: Electric shock, overheating, low or no light output and shortened fixture life can result if proper grounding is not done.

**E)** Replace the wiring compartment cover, securing with the existing retaining screws. Note: Be sure that the wires are not pinched or damaged by any part of the housing or the cover.

- F)** Follow directions on reverse for mounting fixture.

**SAVE THESE INSTRUCTIONS**