

PROJECT

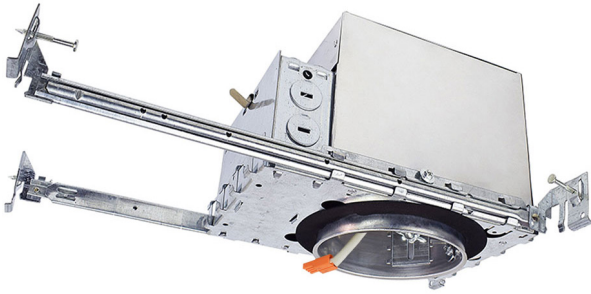
DATE

COMMENTS



IN STOCK

IC RATED



NON-IC RATED



ORDERING LOGIC

EX: NCH4

FAMILY	OPTIONS
NCH4	
	IC IC Rated

NCH4 NEW CONSTRUCTION HOUSING 4-INCH

The NCH4 Series is an airtight new construction housing that offers an IC rating option.

- Hospitality
- Parking Garages
- Utility Rooms
- Corridors
- Closets

PHYSICAL

Material	Die-Formed Aluminum
Mounting	New Construction
Source	E26 LED Medium Base Socket and TP24 Connector
Hanger Bar	
Positioning	Locked at Any Point On 24" Joist Span Can be Shortened for 12" Joists Long or Short Axis of Housing
Alignment	T-Bar Spline
Junction Box	
Listings	UL and CETL for Branch Wiring
Knockouts	1/2" and 3/4" Pry-Out Slots
Wiring	Pre-Wired J-Box with Removable Access Plate
Leads	All Leads #18AWG with Supplied Quick Connectors Ground Wire Connected to the Bottom

PERFORMANCE

Warranty	5 years
Certifications	IC Rated , CETL, UL, Airtight
Operating Temperature	-30°C to 95°C (-22°F to 203°F)

ELECTRICAL

Wattage	50W Maximum
Voltage	120V

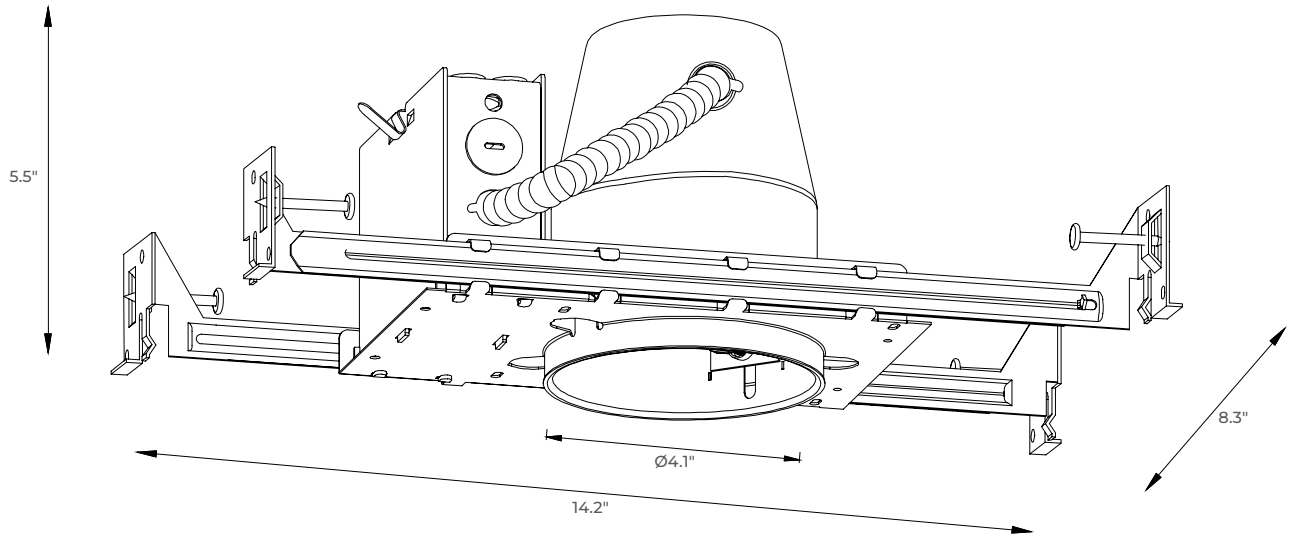
COMPATIBLE DOWNLIGHTS

RDR-4-FS1 ROUND DOWNLIGHT RETROFIT LED	CRDR-4 COMMERCIAL ROUND DOWNLIGHT RETROFIT LED
RAR-4 ROUND ADJUSTABLE DOWNLIGHT RETROFIT LED	SRD-4 4" SQUARE RETROFIT DOWNLIGHT LED
RDL-4 RETROFIT DISK LIGHT LED	ADL-4 ARCHITECTURAL DISK LIGHT LED
SDL-4 SLIM DISK LIGHT LED	SDL-WL-4 SLIM DISK LIGHT LED WET LOCATION



DIMENSIONS

NCH4



NCH4-IC

