



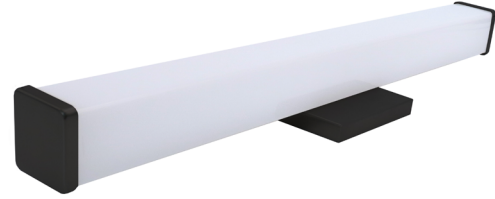
# DUNTON HOUSE

## DECORATIVE LIGHTING

### GLAIVE BATH VANITY LED

PROJECT \_\_\_\_\_ DATE \_\_\_\_\_

COMMENTS \_\_\_\_\_



#### PHYSICAL

|          |                                     |
|----------|-------------------------------------|
| Material | Aluminum                            |
| Mounting | Wall Mount                          |
| Finish   | Black, Bronze, Chrome, Satin Nickel |
| Source   | LED                                 |
| CRI      | 80+                                 |
| CCT      | 2700K, 3000K, 3500K, 4000K, 5000K   |

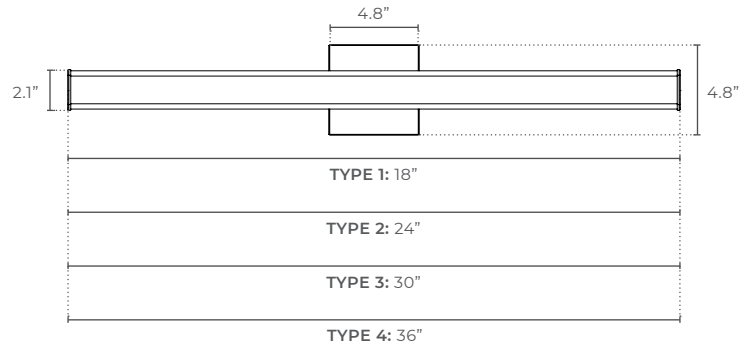
#### PERFORMANCE

|               |                         |
|---------------|-------------------------|
| Warranty      | 3 years                 |
| Certification | ETL, CE, ROHS Compliant |

#### ELECTRICAL

|              |                    |
|--------------|--------------------|
| Wattage      | 12W, 16W, 20W, 24W |
| Voltage      | 120V               |
| Power Supply | Hard Wire          |
| Power Factor | >0.9               |
| Dimmable     | Triac              |

#### DIMENSIONS



#### ENERGY CHART

| SIZE | WIDTH inches | LUMENS | WATTAGE | EFFICACY lm/w |
|------|--------------|--------|---------|---------------|
| 1    | 18           | 840    | 12      | 70            |
| 2    | 24           | 1120   | 16      | 70            |
| 3    | 30           | 1400   | 20      | 70            |
| 4    | 36           | 1680   | 24      | 0             |

#### NOTES

Usage \_\_\_\_\_ Indoor Only

#### ORDERING LOGIC

EX: GLAIVE-1-27-BK

| FAMILY        | TYPE         | CCT             | FINISH                 | OPTIONS   |
|---------------|--------------|-----------------|------------------------|---|
| <b>GLAIVE</b> | <b>1</b> 18" | <b>27</b> 2700K | <b>BK</b> Black        | <b>CC</b> Custom Configurations<br>FOR ADDITIONAL OPTIONS CONTACT SALES@SAGE.LIGHTING |
|               | <b>2</b> 24" | <b>30</b> 3000K | <b>BZ</b> Bronze       |   |
|               | <b>3</b> 30" | <b>35</b> 3500K | <b>CH</b> Chrome       |   |
|               | <b>4</b> 36" | <b>40</b> 4000K | <b>SN</b> Satin Nickel |   |
|               |              | <b>50</b> 5000K |                        |   |