

PROJECT

DATE

COMMENTS



DISCONTINUED



## ENERGY CHART

LUMENS	WATTAGE	EFFICACY lm/w
48,000	300	160
64,000	400	160
80,000	500	160
96,000	600	160
112,000	700	160
128,000	800	160
160,000	1000	160
192,000	1200	160

## SLP SPORTS LIGHT PLUS LED

The SLP Sports Light Plus LED offers a high power, anti-glare system for the outdoors that is 2-10x brighter than a conventional light.

- Parks
- Stadiums
- Outdoor

### PHYSICAL

Material	Aluminum Alloy
Bracket Material	Stainless Steel
Mounting	Joint U-Bracket, Knuckle Flat Bracket, Knuckle Slip Fitter
Lens	PMMA
Finish	Black, Blue, Red, Silver
CCT	3000K, 4000K, 5000K, 6000K
CRI	70+
Beam Angle	15°, 25°, 60°

### PERFORMANCE

Warranty	5 years
Certifications	ETL, CE, ROHS Compliant
IP Rating	IP65
IK Rating	IK10
Rated Life	>80,000 hours
Operating Temperature	-40°C to 55°C (-40°F to 131°F)

### ELECTRICAL

Voltage	100-277VAC, 347-480VAC
Power Factor	0.96
Dimmable	Dali, Zigbee, 1-10V Options Available

## ORDERING LOGIC

EX: SLP-300-10-30-JU-10-BK

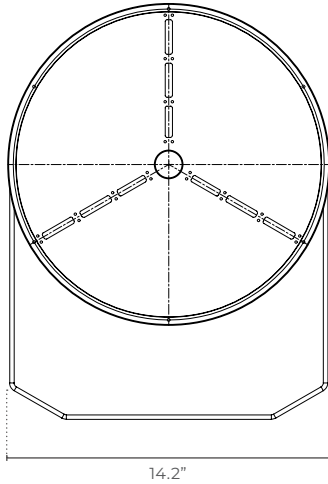
FAMILY	WATTAGE		VOLTAGE		CCT		MOUNTING		BEAM ANGLE		FINISH		OPTIONS	
SLP														
	300	300W	10	100-277VAC STANDARD	30	3000K	JU	Joint U-Bracket STANDARD	15	15°	BK	Black	DALI	Dali Dimming
	400	400W	34	347-480VAC	40	4000K	KF	Knuckle Flat Bracket	30	30°	BL	Blue	ZB	Zigbee Dimming
	500	500W			50	5000K	KS	Knuckle Slip Fitter	60	60°	RD	Red	1-10	1-10V Dimming
	600	600W			60	6000K					SL	Silver		
	700	700W												
	800	800W												
	1000	1000W												
	1200	1200W												



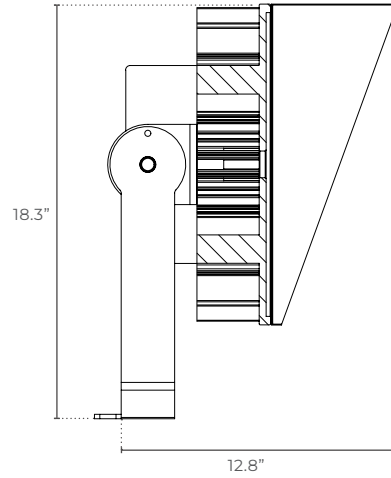
**DIMENSIONS**

**300W-600W**

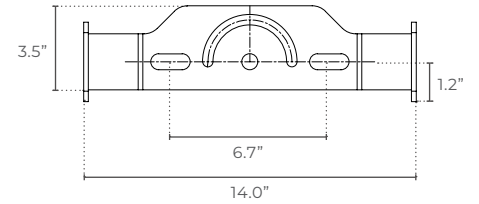
Front



Side

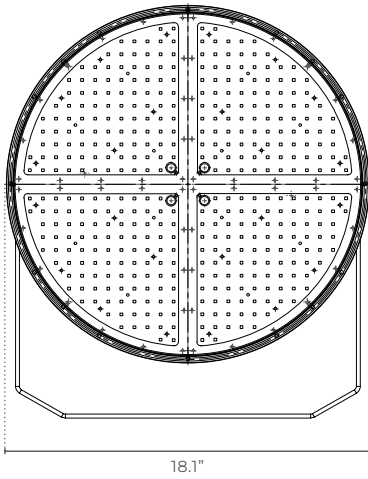


Button

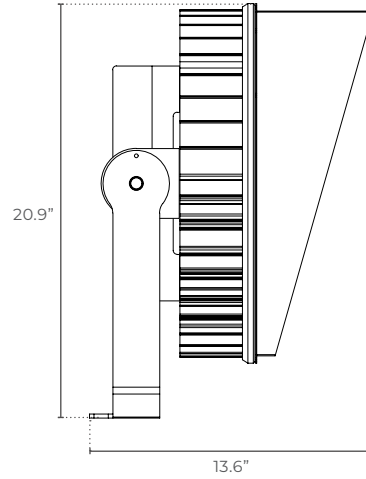


**800W-1200W**

Front



Side



Button

