

IMPORTANT SAFETY PRECAUTIONS

Before you begin, read these instructions completely and carefully.

- Disconnect power at the circuit breaker before installation, maintenance, or removal.
- All wiring must comply with the National Electrical Code (NEC) and local electrical codes.
- Use only UL/IEC approved wire connectors.
- Verify the supply voltage matches the fixture label before wiring.
- Fixture must be properly grounded.
- Wear gloves to protect hands during installation.
- Suitable for damp locations. Not for use where directly exposed to water.



WARNING: Risk of fire, electrical shock, or injury if not installed as directed. This product must be installed by a qualified, licensed electrician familiar with the construction and operation of the product.

SAVE THESE INSTRUCTIONS



TOOLS & MATERIALS REQUIRED

- A) Screwdriver
- B) Pliers
- C) Wire connectors (wire nuts)
- D) Electrical tape
- E) Ladder

INSTALLATION INSTRUCTIONS

1) TURN OFF POWER

Shut off power at the main circuit breaker before beginning installation.

2) PREPARE JUNCTION BOX

Install the provided mounting screws into the junction box, leaving about ¼" exposed.

3) MAKE WIRING CONNECTIONS

Connect fixture green/bare wire to ground wire from junction box.
Connect fixture white wire to white (neutral) supply wire.
Connect fixture black wire to black (hot) supply wire.
Secure all connections with wire connectors and wrap with electrical tape.

4) MOUNT FIXTURE BASE

Align the fixture canopy over the mounting screws so they slide through the keyhole slots. Rotate slightly until secure, then tighten screws until snug against the ceiling.

5) SET COLOR TEMPERATURE (CCT)

Use the built-in CCT switch to select desired color temperature (2700K / 3000K / 3500K / 4000K / 5000K).

6) ATTACH DIFFUSER

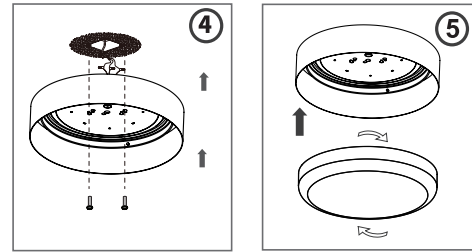
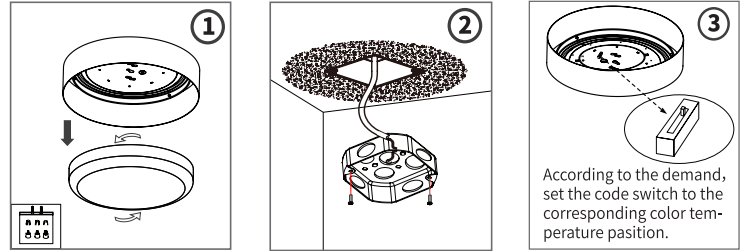
Position the diffuser evenly on the canopy and twist until tight and secure.

7) RESTORE POWER

Turn power back on at the breaker and test fixture operation.

NOTES

- For 120V, 60Hz use only.
- Do not restrict airflow or cover the fixture; overheating may shorten product lifespan.
- Common sense and caution must be used during installation—these safeguards cannot be built into the fixture itself.



SAVE THESE INSTRUCTIONS

