



## IMPORTANT SAFETY PRECAUTIONS

**Before you begin, read these instructions completely and carefully.**

- Be certain electrical power is OFF before and during installation, maintenance and removal.
- Fan wiring must be properly grounded in accordance with the NEC and any applicable local code requirements.
- Use only UL or IEC approved wire for input/output connections.
- Verify that supply voltage matches voltage on fan label. Installation to any other connection may void the warranty.
- Wear gloves during installation to prevent injury and do not expose wiring to metal or sharp edges.



**WARNING:** To reduce the risk of fire, electrical shock, or personal injury, mount this fan to an outlet box marked "Acceptable for Fan Support of 22.7kg (50lbs)" or less and use Mounting Screws provided with the outlet box. CAUTION: Install the primary mounting means and use only the hardware provided with the fan.

To reduce the risk of personal injury, do not bend the blade brackets when installing the brackets, balancing the blades or clearing the fan. Be careful not to insert foreign objects in between rotating fan blades.

To reduce the risk of fire or electrical shock, do not use this fan with any solid-state speed control device.



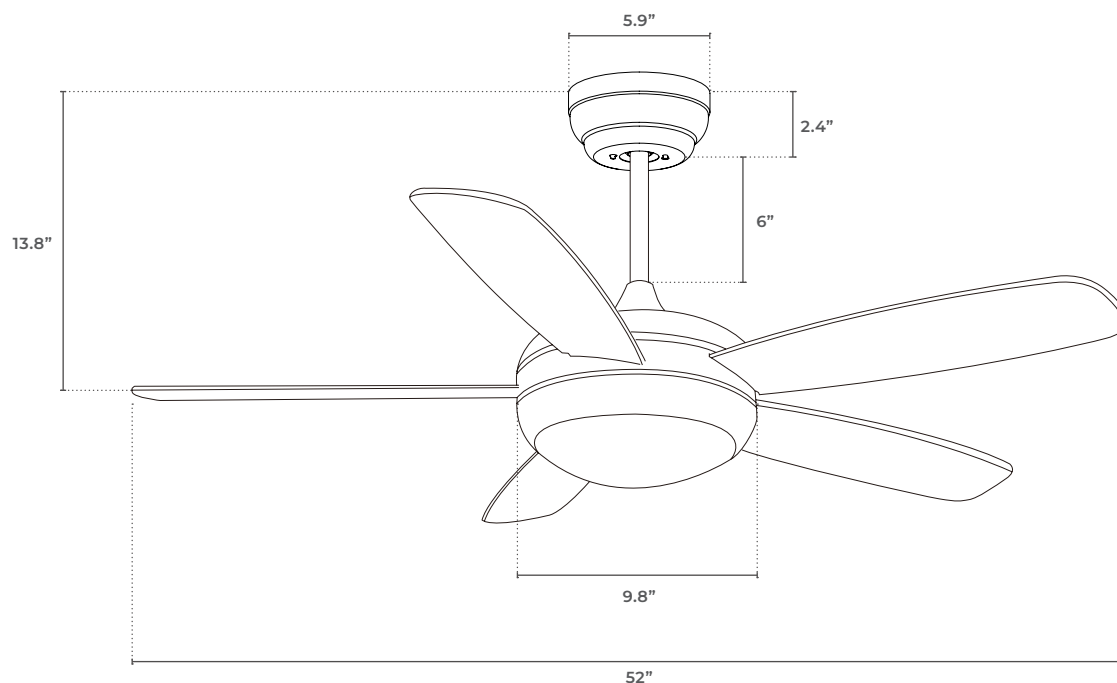
The important safeguards and instructions appearing in this manual are not meant to cover all possible conditions and situations that may occur. It must be understood that common sense, caution and careful attention to detail are factors which cannot be built into this product. These factors must be supplied by the person or persons installing, caring for, and operating the unit.

This product should be installed, inspected and maintained by a qualified and licensed electrician. Installation of luminaire must be in accordance with NEC and local code requirements.

**SAVE THESE INSTRUCTIONS**

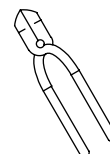
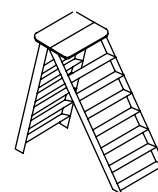
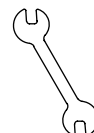
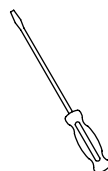
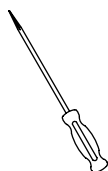


## DIMENSIONS



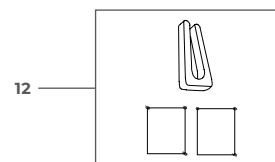
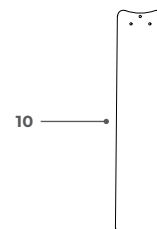
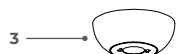
## TOOLS REQUIRED

- Phillips screwdriver
- Flat head screwdriver
- 11mm wrench
- Step ladder
- Wire cutters



## PACKAGE PARTS

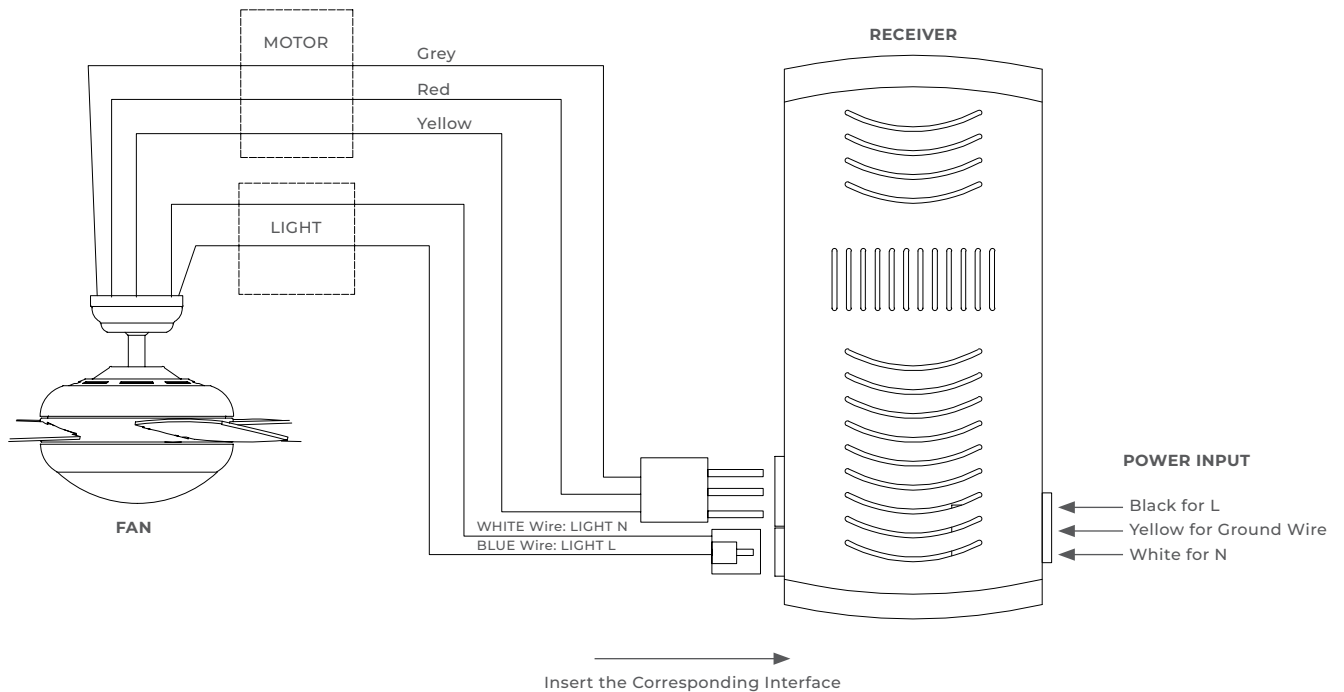
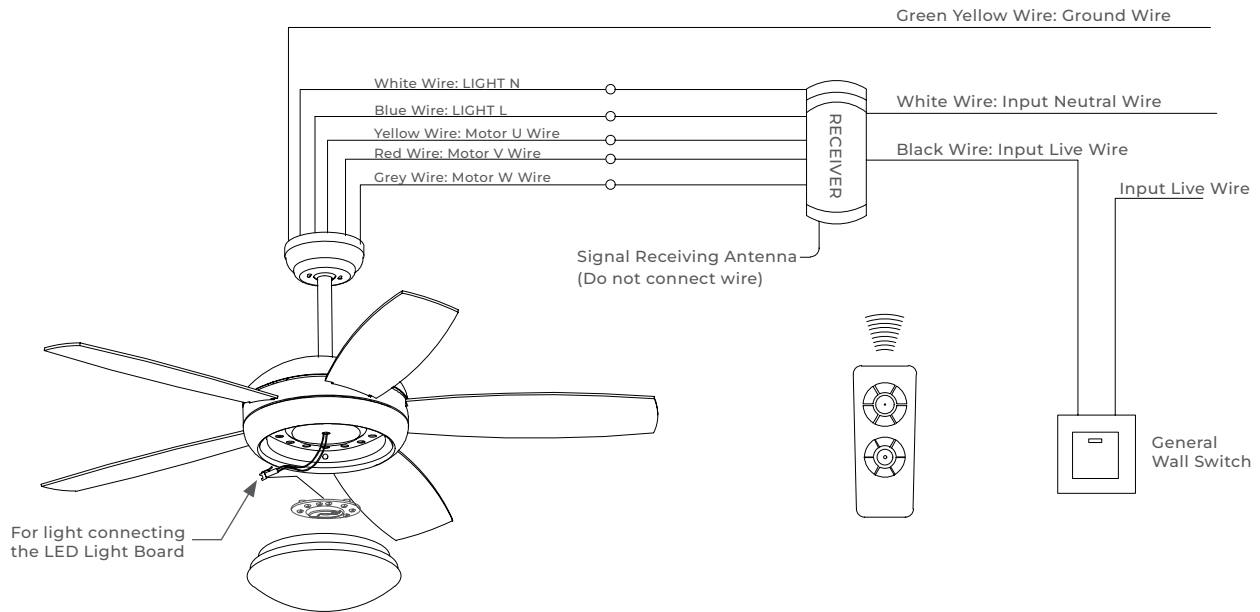
No.	NAME	QUANTITY
1	Fan Bracket	1
2	Pulley and Rod	1
3	Canopy	1
4	Decorative Cover	1
5	Motor Body	1
6	Remote Control	1
7	Lamp Panel	1
8	LED Light Source	1
9	Lamp Shade	1
10	Fan Blade	5
11	Accessory Bag	1
12	Balance Package	1



**SAVE THESE INSTRUCTIONS**



**WIRING DIAGRAM**

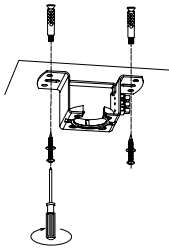


**SAVE THESE INSTRUCTIONS**

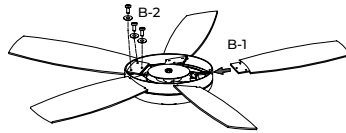


## INSTALLATION INSTRUCTIONS

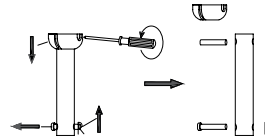
**A)** Install the fan bracket to the ceiling and tighten with the screws.



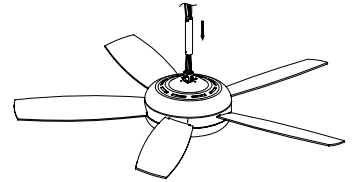
**B)** Insert the fan blades into the fan cover, corresponding to the holes on the blade forks and secure.



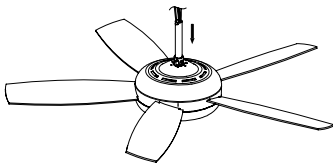
**C)** Remove all parts of the rod.



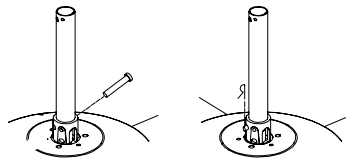
**D)** Insert the rod into the suspension head.



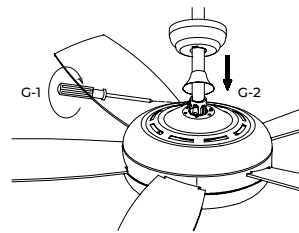
**E)** Align the holes on the rod with the holes on the suspension head.



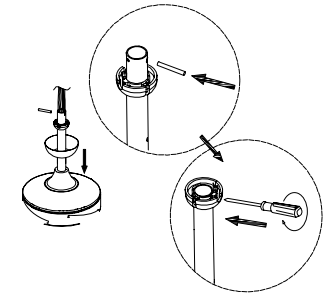
**F)** Insert the corresponding hole with the plug and insert the R pin.



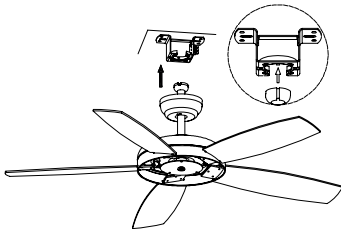
**G)** Tighten the screw until rod is secure. Place the decorative cover and canopy as shown.



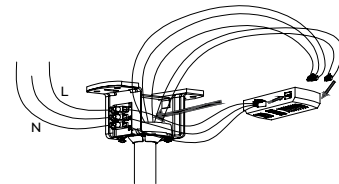
**H)** Thread the horizontal pin through the rod and tighten it with screws.



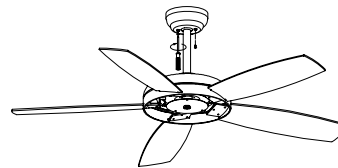
**I)** Slide the pulley and rod into the bracket slot.



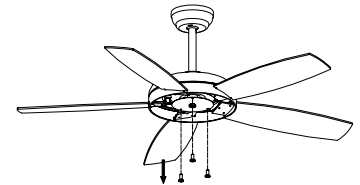
**J)** According to the wiring diagram, insert the socket of the cable into the controller and place the controller inside the suspension wheel.



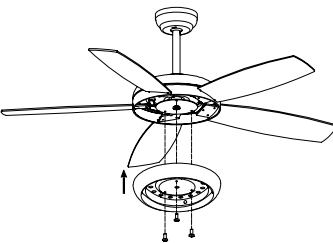
**K)** Lock the canopy on the bracket with the screws and tighten.



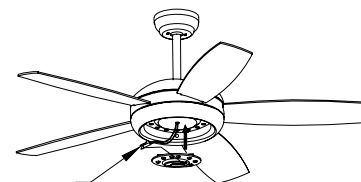
**L)** Unscrew the three screws on the lamp installation platform.



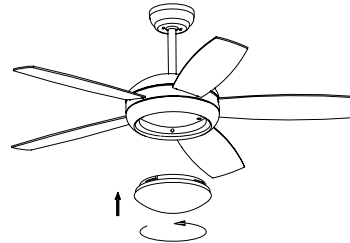
**M)** Install the lamp panel on lamp & tighten screws.



**N)** Connect the LED light board to the wiring and place on the panel



**O)** Place the lampshade onto the lamp panel and twist to secure.



**SAVE THESE INSTRUCTIONS**



## STANDARD REMOTE CONTROL PAIRING AND FUNCTION

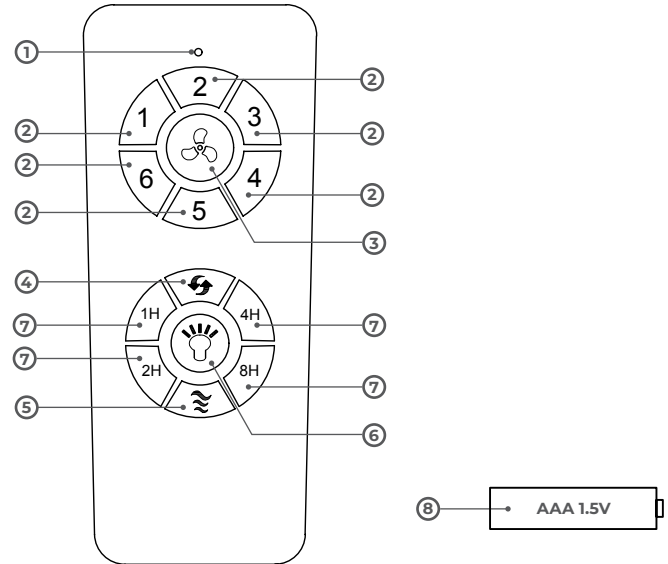
### PAIRING METHOD

After turning on the power switch you will hear a beep. Immediately press "6". When a long beep is heard, the remote control pairing is successful.

**TIP:** The above steps and entire process must be completed within 30 seconds of powering the fan on. If pairing is unsuccessful, power off the fan for 10 seconds and repeat the steps outlined above.

### FUNCTIONS

1. Switch Indicator
2. Fan Speed Settings (1: Lowest / 6: Highest)
3. Fan ON/OFF Function
4. Reverse Fan Direction (Reverse Switch)
5. Natural Wind: Automatic Fan Speeds
6. Light ON/OFF Function
7. Timer (1 hr / 4 hr / 8 hr)
8. Battery for Switch (AAA 1.5V)



## TROUBLESHOOTING

PROBLEM	SOLUTION
The fan will not start.	<ul style="list-style-type: none"> <li>Check the main and branch circuit fuses or breakers.</li> <li>Check the line wire connections to the fan and switch wire connections in the switch housing.               <ul style="list-style-type: none"> <li><b>CAUTION:</b> Make sure the main power is OFF when checking any electrical connections.</li> </ul> </li> <li>Check whether the voltage is seriously lower than the rated voltage of the ceiling fan.</li> <li>If the receiver makes a dripping sound or the light is on after power on, please pair the remote control according to the pairing method.</li> </ul>
The fan is noisy.	<ul style="list-style-type: none"> <li>Ensure all motor housing screws are snug.</li> <li>Ensure the screws that attach the fan blade bracket to the motor hub are tight.</li> <li>Ensure the wire nut connections are not rattling against each other or the interior wall of the switch housing.</li> <li>Allow a 24-hour "breaking in" period. Most noises associated with a new fan disappear during this time.</li> <li>If you are using the Ceiling Fan light kit, ensure the screws securing the glassware are tight. Check that the light bulbs are also secure.</li> <li>Some fan motors are sensitive to signals from solid-state variable speed controls. If you have installed this type of control, choose and install another type of control.</li> <li>Ensure the upper canopy is a short distance from the ceiling. It should not be touch the ceiling.</li> <li>It is not recommended to install on a wooden ceiling, steel structure, or prefabricated board as this will amplify the sound.</li> </ul>
The fan wobbles.	<ul style="list-style-type: none"> <li>Check that all blade and blade arm screws are secure.</li> <li>Most fan wobble problems are caused when blade levels are unequal. Check this level by selecting a point on the ceiling above the tip of one of the blades. Measure from a point on the center of the blade to the point on the ceiling. Rotate the fan until the next blade is positioned for measurement, and measure from the same point on each blade to the ceiling. Repeat for each blade. Any measurement deviation should be within 1/8 in.</li> <li>Use the enclosed Blade Balancing Kit if the blade wobble is still noticeable.</li> <li>If the blade wobble is still noticeable, interchanging two adjacent (side by side blades can redistribute the weight and possibly result in smoother operation.               <ul style="list-style-type: none"> <li><b>WARNING:</b> To reduce the risk of personal injury, do not bend the blade arm while installing, balancing the blades, or cleaning the fan. Do not insert foreign objects between rotating fan blades.</li> </ul> </li> </ul>
The light will not turn on.	<ul style="list-style-type: none"> <li>Check if the lamp wire connection is loose.</li> <li>Check the light switch for damage, loose thread, or bad contact.</li> <li>Check the light source if it's burnt out.</li> </ul>

**SAVE THESE INSTRUCTIONS**



## CEILING FAN BALANCE INSTRUCTIONS

If the fan is wobbling after installation, please confirm whether all the screws are secure. If the wobbling persists, follow the following steps.

### 1) Change the Blade Positions

**A)** As shown in Figure 1, take off fan blades 1 and lock them tightly against each other to observe the effect.

**B)** If there is no improvement after adjustment, please switch the fan blade 2 and 3 and lock them tightly.

### 2) Use the Balance Package

**A)** Take out the balancing bag in the package box and use the balancing clip to select and clip to one edge of the fan blades (Figure 2).

**B)** Turn on the fan switch to see if the swing of the ceiling fan has been reduced. If not, try another fan blade. For all the fan blades, the weakest one was found.

**C)** Place the balancing clip on the weakest fan blade, move inward or outward on the blade edge, and open the ceiling fan to find the best position for the balancing clip to control the steady wobble (as shown in FIG. 2 on the right).

**D)** Take the balance sticker, tear off the double sided adhesive tap of the balance sticker, and stick the balance sticker to the central position of the blade in the position of the balance clamp (as shown in Figure 2 on the right).

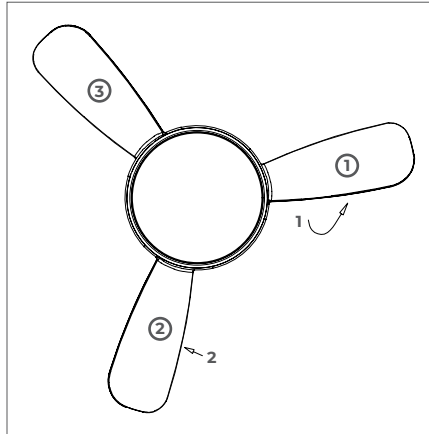


FIGURE 1

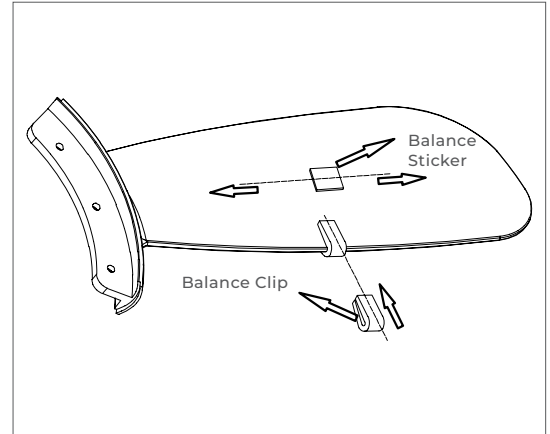


FIGURE 2

**SAVE THESE INSTRUCTIONS**

